

Improvements on the Oxley Highway near Carroll

October 2017



Water over the Oxley Highway at Hoss Causeway, east of Carroll

The NSW Government is funding plans to improve flood immunity, improve safety and reduce future maintenance costs on the Oxley Highway near Carroll. You are invited to view the proposal and ask questions at a community drop-in session in Carroll on **Wednesday 25 October**.

Background

The Oxley Highway stretches 514 kilometres, starting on the mid-north coast of NSW at Port Macquarie and extending west to connect with the inland centres of Tamworth, Gunnedah, Coonabarabran, Gilgandra and Warren.

The NSW Government is funding the delivery of vital road improvements along the highway.

This important work stems from the Oxley Highway Route Safety Review and the Oxley Highway corridor strategy.

Each day almost 4000 motorists travel along the Oxley Highway between Gunnedah and Tamworth. When it rains, localised flooding of the Hoss Causeway (immediately east of Carroll) and Tommy Swamp (about seven kilometres west of Carroll) as well as possible overflow from the

Project benefits

The key benefits of the project are to:

- Increase the flood immunity at the Hoss Causeway and Tommy Swamp to one in five year standard
- Reduce the frequency of the Oxley Highway being cut by floodwater
- Improve safety by removing the dip at Tommy Swamp
- Minimise future maintenance requirements.

Namoi River, can result in the temporary closure of the Oxley Highway, causing lengthy delays for motorists.

Upgrading the highway

We are proposing to upgrade the road to minimise water flowing across the Oxley Highway. The upgrade will involve raising the road level and installing new drainage at Hoss Causeway and Tommy Swamp on the Oxley Highway. We are also proposing to raise the road level on Gunnembene Lane. These measures will allow the highway to remain open in flood events (up to one in five year interval floods).

Community drop-in sessions

Our project team will be available to answer questions and take your feedback about the proposal at a staffed 'drop-in' session. There will be no formal presentations so community members can visit at any time during the session.

When: Wednesday 25 October, 3-7pm

Where: Carroll Progress Association meeting room, Oxley Highway, Carroll

What happens next?

Work on the project will start following the completion of community consultation, environmental assessment and detailed design. Feedback received from the community will be considered in finalising the design.

More information

For more information about the proposal or to register your interest for updates, please contact the project team by:

Phone: 02 66401300 (during business hours)

Email: grafton.regional.office@rms.nsw.gov.au

More information is also available at rms.nsw.gov.au/hosscauseway



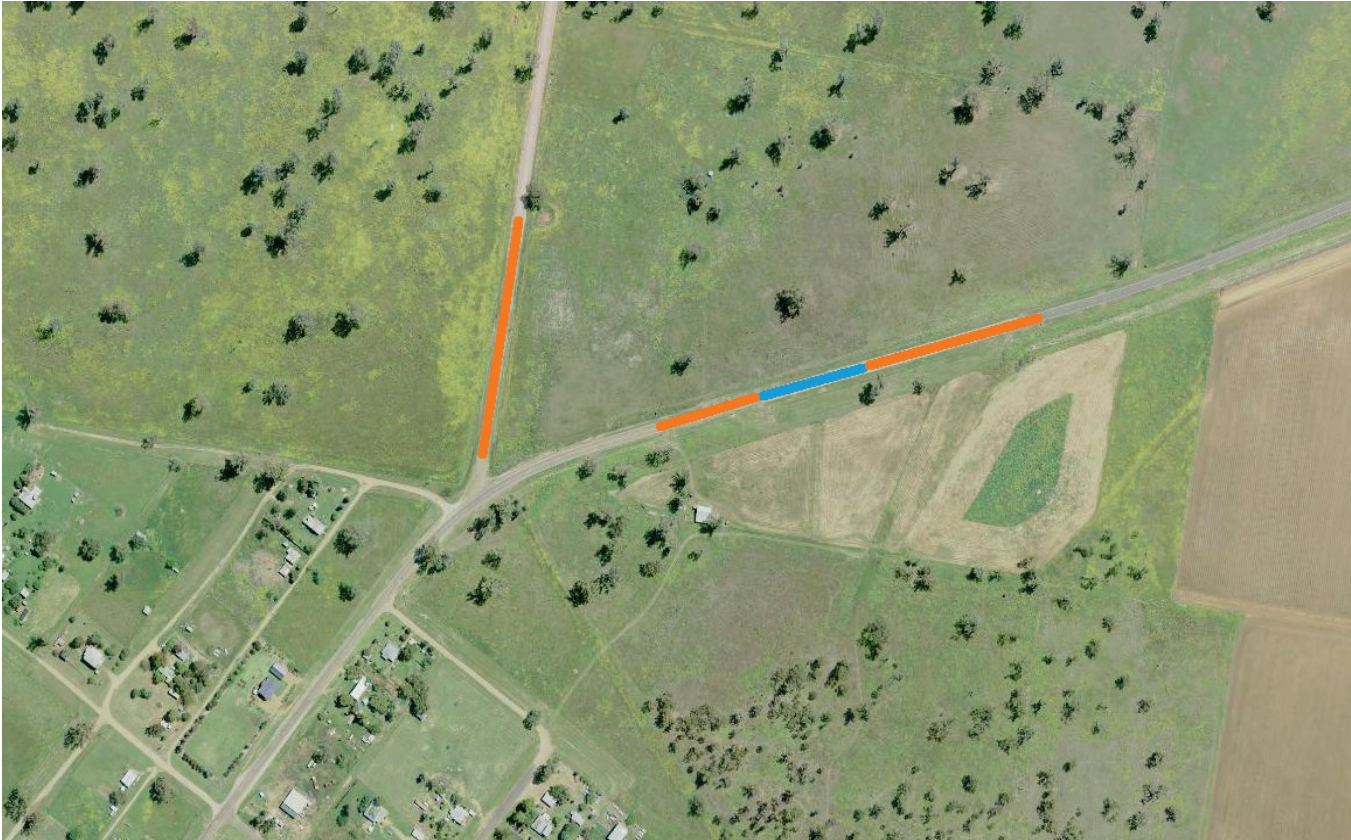
If you need help understanding this information, please contact the Translating and Interpreting Service on 131 450 and ask them to call us on 131 782.



The road level of the Oxley Highway at Hoss Causeway will be raised to improve flood immunity

Proposed improvements on the Oxley Highway at Carroll




Hoss Causeway



Tommy Swamp



Key

-  Section of road to be raised at these locations
-  New box culverts to improve drainage at Hoss Causeway
-  Pipes to improve drainage at Tommy Swamp