



GUNNEDAH SHIRE

# CRIME PREVENTION PLAN

2018 - 2022

## INTRODUCTION

Acknowledgement of Country .....	4
A Message from our Mayor & General Manager .....	4

## OUR STRATEGIC DIRECTION

Our Mission .....	8
Our Community Values .....	8
Our Vision for a Safe Community .....	8
Our Actions to Achieve Our Vision .....	9

## OUR FRAMEWORK

Legislative Context .....	12
Theoretical Context .....	12
Situational Crime Prevention .....	12
Social Crime Prevention .....	13
Developmental Crime Prevention .....	13
Crime Prevention through Environmental Design .....	13
Gunnedah Crime Prevention Working Group .....	14
Our Plan .....	15
Our Methodology .....	15

## PART A - OUR COMMUNITY PROFILE

Our Political Boundaries .....	18
Who We Are! .....	18
A Snapshot .....	19

## PART B - OUR CRIME PROFILE

Policing .....	22
Reporting Crime in Our Shire .....	22
Local Crime Statistics .....	22
Statistics .....	23 - 28
BOCSAR Recorded Offences against Selected Crime Types .....	30 - 31

# CONTENTS

## PART D - OUR ACTION PLAN

Priority 1 Assault – Strategy 1.1 .....	34
Priority 1 Assault – Strategy 1.2 .....	35
Priority 1 Assault – Strategy 1.3 .....	36
Priority 2 Property Crime – Strategy 2.1 .....	37
Priority 2 Property Crime – Strategy 2.2 .....	38
Priority 3 Alcohol and Drug Related Offences - Strategy 3.1 .....	39
Priority 3 Alcohol and Drug Related Offences- Strategy 3.2 .....	40
Priority 4 Malicious Damage and Vandalism - Strategy 4.1 .....	41
Priority 4 Malicious Damage and Vandalism – Strategy 4.2 .....	42
Priority 5 Safety through Community Development – Strategy 5.1 .....	43
Priority 5 Safety through Community Development – Strategy 5.2 .....	44 - 45

## PART D – OUR IMPLEMENTATION APPROACH

Implementation .....	48
Resources .....	48
Monitoring and Evaluation .....	48
Next Review Date .....	48

## ACKNOWLEDGEMENTS AND APPENDICES

Appendix 1 - Glossary of Offence Categories .....	52 - 53
Appendix 2 - Other Key Definitions and Acronyms .....	54
Resources and References .....	55
Websites .....	55

# ACKNOWLEDGEMENT OF COUNTRY

In presenting this document to the community, Gunnedah Shire Council and the Gunnedah Crime Prevention Working Group would like to acknowledge the Kamilaroi Aboriginal Nation as the traditional custodians of the land on which we live and work, and in doing so, Council pays its respect to all Elders past and present as well as to the young Indigenous leaders of tomorrow.

## A MESSAGE FROM OUR MAYOR & GENERAL MANAGER

Dear residents of Gunnedah Shire,

It is with pleasure that we present to the community, Council's recently reviewed Crime Prevention Plan 2018 - 2022. In formulating this Plan, Council was able to measure if the strategies applied over the last three years had changed the perception in the community regarding crime and community safety. It also allowed Council to determine if those priorities should be amended.

The new plan outlines the community's key safety priorities for our Shire, and is a 'living, tangible' working tool on which to focus our community safety endeavours. It sets out a clear action plan for how Council, in partnership with other government and community organisations will address local concerns about crime, and incorporates practical and workable strategies for improving the safety amenity of the Gunnedah Local Government Area.

Evidence shows that the rate of crime across our Shire is low, however it is clear from the feedback received, that our Shire supports ongoing efforts to address domestic and family violence, alcohol related offences, property crime and anti-social offences such as vandalism and graffiti.

On that basis, Council will continue to work with the community and key stakeholders, such as the Oxley Local Area Command, Crime Prevention Working Group and Gunnedah Liquor Accord, to achieve a crime-free community.

We invite residents and key stakeholders to continue to take the opportunity to work with us to achieve the Plan's outcomes.



  
Jamie Chaffey  
Gunnedah Shire Mayor

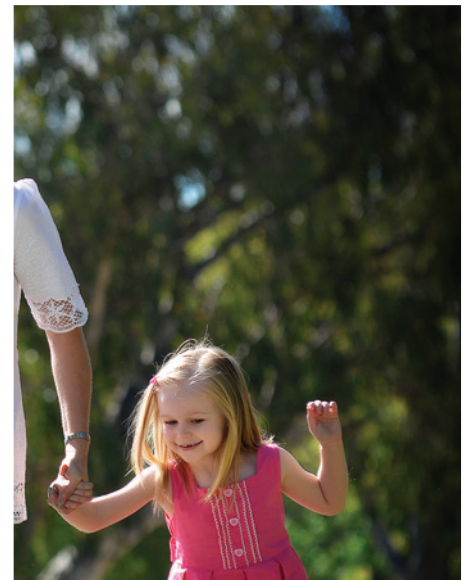
  
Eric Groth  
General Manager







# OUR STRATEGIC DIRECTION



## OUR MISSION

To promote, enhance and sustain the quality of life in the Gunnedah Shire through balanced economic, environmental and social management in partnership with the people.

## OUR COMMUNITY VALUES

### COMMUNITY SPIRIT

We have welcoming towns, villages and rural areas working in partnership to share the good times and bad, looking out for, and supporting one another. We genuinely care.

### LIFESTYLE ACCESS

We enjoy access to services and facilities in Gunnedah, yet benefit from the peace, tranquility, safety, security, beauty and friendliness of our rural community.

## OUR VISION FOR A SAFE COMMUNITY

A safe, prosperous, caring and proud community reflected in the achievements and aspirations of the people.





# OUR ACTIONS TO ACHIEVE OUR VISION

Five (5) crime categories have been identified as priority areas in the new Plan, based on:

- a. number of incidents recorded in the Gunnedah Shire within the last 12-18 months
- b. high ratings when compared to the rest of NSW
- c. emerging crime trends
- d. community sentiment

These are:

1. Priority Area 1 – Assault (Domestic and Family Violence, Common and Sexual Assault)
2. Priority Area 2 – Property Crime (Break and Enters, Stealing, Theft)
3. Priority Area 3 – Alcohol & Drug Related Offences
4. Priority Area 4 – Malicious Damage and Vandalism Offences (Includes Graffiti)
5. Priority Area 5 – Safety through Community Development

Strategies have also been derived with consideration to the comments made by residents throughout the Shire via the consultation process. Priority areas are represented in no significant order, with all rated as equally important.

## PRIORITY AREA 1 - ASSAULT

Strategy 1.1: Upgrade infrastructure in targeted areas to prevent non-domestic violence related assault

Strategy 1.2: Raise community awareness of domestic violence, family violence and sexual assault across the Shire

Strategy 1.3: Improve the level of safety in targeted locations throughout the Shire

## PRIORITY AREA 2 - PROPERTY CRIME (BREAK AND ENTERS, STEALING, THEFT)

Strategy 2.1: Support education and awareness campaigns which aim to prevent property crime offences across the Shire

Strategy 2.2: Increase CCTV and community surveillance measures in Gunnedah and across the Shire

## PRIORITY AREA 3 - ALCOHOL AND DRUG OFFENCES

Strategy 3.1: Address alcohol and drug related problems that occur at community events throughout the Shire

Strategy 3.2: Address alcohol and drug related problems that occur at licensed events throughout the Shire

## PRIORITY AREA 4 - MALICIOUS DAMAGE AND VANDALISM

Strategy 4.1: Support education and preventative programs to address malicious damage and vandalism offences across the Shire

Strategy 4.2: Eliminate graffiti related offences across the Shire

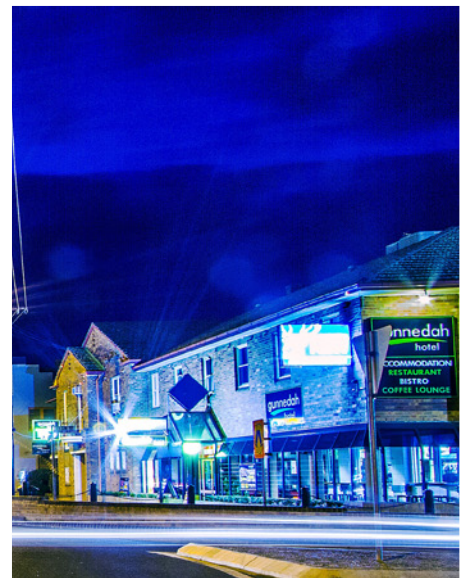
## PRIORITY AREA 5 - SAFETY THROUGH COMMUNITY DEVELOPMENT

Strategy 5.1: Educate the community on Safer by Design (CPTED) principles

Strategy 5.2: Reduce level of harassment, bullying and anti-social behaviour incidents across the Shire



# OUR FRAMEWORK



## LEGISLATIVE CONTEXT

Chapter 3, Section 8 of the *NSW Local Government Act 1993*, sets out a charter for local government and states that local councils should provide directly or on behalf of other levels of government, adequate, equitable and appropriate services and facilities for the community.

In April 2001, the NSW Department of Planning and Infrastructure introduced Crime Prevention Guidelines to Section 79c of the *Environmental Planning and Assessment Act, 1979*. These guidelines require consent authorities to ensure that development provides safety and security to all users and the community.

The *Children (Protection and Parental Responsibility) Act 1997* provides for the Attorney General to support Councils leading crime prevention activities in NSW. Part 4 of the Act, identifies local governments as lead agencies for developing and implementing local crime prevention strategies in NSW. An objective of the Act is to work toward a safer environment while encouraging the participation of citizens in the development of local crime prevention plans. In 2017 Gunnedah Shire Council was endorsed as a Safer Community Compact under the Act and on the strength of its 2014-2017 Crime Prevention Plan. The endorsement remains in force until November 2020.

## THEORETICAL CONTEXT

The NSW Attorney General's Crime Prevention Division provides guidelines for Local Government on the establishment of crime prevention plans. Those guidelines outline the process to construct a plan based on evidence of criminal activity, the analysis of the needs of the community and the capacity of the community to implement those strategies contained in the plan.

Preventing crime through the use of police, courts and the prison system is one approach. Studies show that while the threat of apprehension, being sentenced and being imprisoned does deter people from getting involved in crime, many will often not become involved in crime for a variety of reasons other than because of this fear. For this reason, having more police and sending people to prison will only be partly effective (and will be very costly).

The criminal justice system plays a vital role in deterring offenders and rehabilitating them after they have served their sentence, but criminal justice approaches on their own will only be partly effective. Being smarter about how we treat people who have offended can prevent further crime. Providing drug treatment, education and employment programs and supervision in the community has been shown to be effective in preventing recidivist behaviour. There are four (4) main types of crime prevention strategies put forward by the NSW Attorney General which include:

- a. Situational Crime Prevention
- b. Social Crime Prevention
- c. Developmental Crime Prevention
- d. Crime Prevention Through Environmental Design

## SITUATIONAL CRIME PREVENTION

Situational crime prevention measures generally attempt to make it harder to commit a crime, less rewarding and easier to be caught. Many crimes are opportunistic. An open door to a home, a mobile phone in an unlocked vehicle may prove too tempting for some people.

Campaigns like 'lock it or lose it' encourage citizens to take responsibility for the safety and security of their possessions. Locking doors, installing alarms in motor vehicles, improved lighting in areas where people are assaulted and installing safes in convenience stores or petrol stations have all proven effective deterrence measures.

## SOCIAL CRIME PREVENTION

Social crime prevention is based on the premise that people who feel part of a community, have hope for the future, opportunities to work and contribute to their communities are less likely to offend. Social factors contributing to crime include exposure to violence, lack of family support, poor school attendance, and retention, poverty, unemployment, drug and alcohol misuse, inability to access essential services, environmental design, boredom, anger, peer pressure and lack of recreational choices.

By identifying the relevant social issues in the Gunnedah Shire and by developing whole-of-community approaches that aim to improve access to community services and enhance employment and education opportunities, citizens develop a greater 'sense of place' and connectedness to the community in which they live.

## DEVELOPMENTAL CRIME PREVENTION

The type of experience you have as a child can impact on your chances of becoming involved in crime later in life. This does not mean that every child who is abused or neglected will become a criminal however it does mean that more people who are criminals have experienced these conditions. Evidence suggests that by helping parents be better parents and through the provision of support to new parents and services for children and young people, crime can be prevented.

## CRIME PREVENTION THROUGH ENVIRONMENTAL DESIGN (CPTED)

Crime Prevention through Environmental Design (CPTED) also known as Safer by Design involves the design, variation and management of the built and landscaped environment to limit opportunities for crime to occur. The aim is to create safer spaces and places that are less prone to targeting by offenders of opportunistic crime. Interventions that have been implemented to target malicious damage have typically focused on urban renewal measures, which aim to enhance the general amenity of an area by keeping it clean, well maintained and attractive to potential users.

Research shows that this can help to encourage a sense of personal safety among users and increase pedestrian movement and use of an area. Local government has an important role to play through the implementation of CPTED principles in its planning and development approval processes. CPTED works on the understanding that criminals consider three (3) key questions when determining whether to commit break and enter offences, with all impacting upon each other.

1. **Surveillance** - Will I be seen?
2. **Access** - Can I get in and out?
3. **Territoriality** - Does anyone care what happens here?



# GUNNEDAH CRIME PREVENTION WORKING GROUP

Council recognises that local government has an important role to play in the identification and implementation of community based crime prevention and community safety in the Gunnedah Shire. To that end, Council established the Gunnedah Crime Prevention Working Group which is an advisory committee of Council.

The purpose of the Working Group is to:

- Identify community safety issues relevant to the Shire
- Provide input into the preparation and review of policies relating to medium and long term crime prevention and community safety planning
- Provide input into the preparation and review of strategies to encourage all sections of the community to understand and recognise the contribution that they can make in relation to community expectations of crime prevention and community safety
- Assist Council and staff to identify and analyse the crime profile of the Gunnedah Shire
- Provide input into the preparation and review of policies and strategies for urban design, open space and recreational services development and management that are relevant to crime prevention and community safety issues, and
- Assist Council and staff to promote positive interaction between diverse sectors of the community and offer opportunities for consultation and collaboration regarding causes of crime, crime prevention and community safety issues

## MEMBERSHIP OF THE WORKING GROUP

The group is chaired by a Councillor elected by the working group. Membership of the working group is broad and currently includes representatives from the following:

- Councillors
- Council staff
- Police (Oxley Local Area Command)
- Gunnedah Police Citizens Youth Club
- Gunnedah Family Support Service
- Gunnedah & District Chamber of Commerce and Industry Inc.
- Homes North
- Aboriginal representatives
- Youth representatives
- Community representatives



## OUR PLAN

Our Crime Prevention Plan 2018 - 2022 is written in four (4) parts.

### **Part A Our Community Profile**

Describes who we are as a Shire

### **Part B Our Crime Profile**

Provides evidence based information on the incident of crime input Shire across a variety of crime categories

### **Part C Our Action Plan**

Articulates strategies to reduce crime and to wherever possible enhance community safety throughout our Shire

### **Part D Our Implementation Approach**

How we will deliver on the actions and strategies



## OUR METHODOLOGY

A number of consultation methods were employed to ascertain the views and sentiment of the community. Consultations methods included:

- a. A priority focused workshop involving the Gunnedah Crime Prevention Working Group
- b. An online and paper based community safety perceptions survey over an 8 week period. Surveys were widely distributed electronically and made available on Council's website. A total of 72 surveys were completed
- c. Individual resident discussions
- d. One on one discussions with various community service and government organisations
- e. Written submissions were invited from residents throughout the Shire
- f. Presentations to numerous community meetings including Gunnedah Liquor Accord, Gunnedah Homelessness and Domestic Violence Interagency and Gunnedah Community Roundtable,
- g. An internal desktop audit of strategic planning documents and internal reports relevant to the development of the Plan
- h. A preliminary assessment of the current legislative framework and key government and community stakeholders in crime prevention and community safety activities in the Gunnedah local government area
- i. An analysis of 2016 Australian Bureau of Statistics (ABS) population census data and Bureau of Crime Statistics and Research (BOCSAR) data to consider crime trends

In addition, opportunities were taken to capture additional community safety related feedback in the development of the Gunnedah Community Strategic Plan 2018 - 2022 and the Gunnedah Shire Disability Inclusion Action Plan.





# PART A OUR COMMUNITY PROFILE



## OUR COMMUNITY

Gunnedah Shire is located in the North West Slopes Region of (north west) New South Wales, and covers an area of 5,001 Km<sup>2</sup>. The Shire sits at the southern end of the Nandewar Range and lies within the upper catchment area of the Namoi River. The Gunnedah Local Government Area has seven (7) small villages – Breeza, Carroll, Curlewis, Emerald Hill, Kelvin, Mullaley, Tambar Springs and twenty six (26) rural localities. By road, Gunnedah is approximately 450 kilometres from Sydney, 655 kilometres from Brisbane and just over 1,000 kilometres from Melbourne. Gunnedah Shire has its own airport and is serviced by Tamworth Regional Airport, which has frequent flights to Sydney and Brisbane. The Shire is easily accessible to main highways and lies on the North West (Country-Link) rail line which runs daily rail passenger services to Newcastle and Sydney.

## OUR POLITICAL BOUNDARIES

The Gunnedah Local Government Area (LGA) falls within the State Government Seat of Tamworth where Mr Kevin Anderson MP is the current sitting member, and the Federal Seat of Parkes where Mr Mark Coulton MP is the current sitting member.

*Figure 1: Gunnedah LGA*



## WHO WE ARE!

- At the time of the 2016 Census of Population and Housing, the Gunnedah Shire had an estimated resident population of 12,551 people (based on place of usual residence), living in 5,513 dwellings, with an average household size of 2.43 - of these 50% were male and 50% were female
- From 2011 to 2016 the Shire experienced marginal growth with an additional 47 estimated new residents. Projections released by the Department of Planning NSW in May 2014 reaffirmed this forecast by projecting the region to experience ongoing population growth to 2031 of between 0.2 and 0.3% annually
- 79.7% of our estimated population (10,013 people) lives within the Gunnedah urban area, while 20.3% (2,538 people) reside in the immediate surrounding rural area. 14.10% (1770) of our residents live in our villages of Breeza, Curlewis, Carroll, Emerald Hill, Kelvin, Mullaley, Tambar Springs
- 41.5% (5,212 people) of our Shire was employed, of which 63% worked full-time and 33% worked part-time. Our residents love to volunteer with 24% (2,173 people) reporting that they do some form of voluntary work. This represents an increase of 140 from 2011 (Regional NSW average is 20.0%)
- Households were comprised of 3191 families - 27% Couples with children (25% Regional NSW) and 26.1% Couples without children (27.0% Regional NSW)
- Overall in 2016, 24.2% of our population was aged between 0 and 17, and 25.0% were aged 60 years and over, compared with 22.1% and 27.2% respectively for Regional NSW
- The largest changes in the age structure in this area between 2011 and 2016 were in the age groups; Young workforce (25 to 34) (+285 people); Secondary schoolers (12 to 17) (-211 people); Parents and homebuilders (35 to 49) (-83 people) and Seniors (70 to 84) (+77 people)

## A SNAPSHOT OF OUR COMMUNITY

### Median age

**40** ↔(0)

Regional NSW	43 ▲
New South Wales	38 ↔
Australia	38 ▲

### Aboriginal and Torres Strait Islander Population

**12.8%** ▲(1.5%)

Regional NSW	5.5% ▲
New South Wales	2.9% ↔
Australia	2.8% ↔

### Couples with children

**27%** ▼(-1.0%)

Regional NSW	25% ▼
New South Wales	32% ↔
Australia	30% ↔

### Older couples without children

**10%** ↔(-0.5%)

Regional NSW	13% ▲
New South Wales	10% ▲
Australia	10% ▲

### Lone person households

**26%** ↔(-0.5%)

Regional NSW	26% ↔
New South Wales	22% ▼
Australia	23% ↔

### Medium and high density Housing

**10%** ▼(-0.7%)

Regional NSW	17% ▲
New South Wales	33% ▲
Australia	27% ▲

### Median weekly household income

**\$1,253** ▲(\$317)

Regional NSW	\$1,166 ▲
New South Wales	\$1,481 ▲
Australia	\$1,431 ▲

### Median weekly mortgage repayment

**\$329**

Regional NSW	\$366
New South Wales	\$456
Australia	\$409

### Median weekly rent

**\$248**

Regional NSW	\$278
New South Wales	\$384
Australia	\$339

### Households renting

**30%** ▲(1.1%)

Regional NSW	26% ↔
New South Wales	30% ▲
Australia	29% ▲

### Households with a mortgage

**28%** ▲(1.2%)

Regional NSW	29% ▼
New South Wales	30% ▼
Australia	32% ▼

### Overseas born

**5%** ▲(0.8%)

Regional NSW	11% ↔
New South Wales	28% ▲
Australia	26% ▲

### Language at home other than English

**2%** ▲(0.7%)

Regional NSW	6% ▲
New South Wales	25% ▲
Australia	21% ▲

### University attendance

**2%** ↔(0.2%)

Regional NSW	3% ↔
New South Wales	5% ▲
Australia	5% ▲

### University qualification

**10%** ▲(2.5%)

Regional NSW	14% ▲
New South Wales	23% ▲
Australia	22% ▲

### Trade qualification (certificate)

**23%** ▲(1.9%)

Regional NSW	24% ▲
New South Wales	18% ↔
Australia	19% ▲

### Unemployment rate

**5.7%** ▼(-0.7%)

Regional NSW	6.6% ↔
New South Wales	6.3% ↔
Australia	6.9% ▲

### Participation rate (population in labour force)

**59%** ↔(0.4%)

Regional NSW	55% ▼
New South Wales	59% ↔
Australia	60% ▼

### Public transport (to work)

**2%** ▲(2.0%)

Regional NSW	2% ↔
New South Wales	16% ▲
Australia	11% ▲



# PART B

# OUR CRIME PROFILE



## POLICING

The Oxley Local Area Command (LAC) is located in the mid-north west of New South Wales, with the main administrative centre at Tamworth. The Oxley LAC headquarters is also located at Tamworth, which is located 419 kilometres north of Sydney and 575 kilometres south of Brisbane on the New England Highway. The command stretches from Quirindi in the south to Upper Horton via Barraba in the north. The Command extends from Tambar Springs in the west, to Gingers Creek in the east, which is 85 kilometres south-east of Walcha. The Command is 240 kilometres wide and 174 kilometres deep. The Oxley LAC covers an area of approximately 26,035 square kilometres of varying topography that includes urban, rural (farming) and tracts of national parks, large sections of which are virtually inaccessible. The major centres of population are Tamworth and Gunnedah. It is noted that the current Command areas are currently under review, and that a change is anticipated in 2018.

## REPORTING CRIME IN OUR SHIRE

In recent years, concentrated efforts have been made to encourage all residents, businesses and Council to report crime when it occurs. The following contact numbers are provided to promote awareness throughout the community, of the preferred reporting protocol.

1. Emergency – Phone: 000 - Life threatening situations or crimes in progress
2. Police Assistance Line (PAL) – Phone: 131 444 - Non-life threatening crime
3. Gunnedah Police – Phone: 02 6742 9099
4. Crime Stoppers – Phone: 1800 333 000 - Criminal/suspicious behaviour anonymously
5. Graffiti Hotline – Phone: 1800 707 125 - Free call gam to 5pm (Council and private property-related offences)



## LOCAL CRIME STATISTICS

The Gunnedah Policing Sector of the Oxley LAC has provided crime statistics for the area and in some categories the number of incidents for particular offences has increased. It is important to note however that in the formulation of this Plan, these increases may not necessarily indicate an increased level of crime but rather an increased number of residents throughout the Shire who have chosen to report crime. The reasons for not reporting crimes remain include:

- a. Fear of increased insurance premiums
- b. Perception that police are not available to respond in the immediate area
- c. Perceived lack of confidence in apprehension and punishment outcomes
- d. Perception that the severity and 'value' of the crime does not warrant a police response or intervention
- e. Fear of reprisal and re-victimisation
- f. Transient or visitor status of the 'victim': and/or
- g. Desire of the victim to 'put the incident behind them and to move on'

# STATISTICS

## ASSAULT

### Domestic and Non-Domestic Violence Related

Statistics for 2017 indicate 39 offenders were apprehended compared to 88 in 2013. The age and gender of offenders has changed significantly with a higher proportion aged 10-17 recorded and a higher proportion of females apprehended. In 2013, only 1 (1.2%) offender was aged 10-17, while in 2017 ten (25.6%) were recorded. In 2013, all offenders were male, compared to 26 (66.7%) in 2017. The peak period for non-domestic violence related assault is from 4-5pm in the afternoon to 10-11pm at night. Although there continues to be a significant number of assaults in the early hours of the morning it is thought the assaults occurring early morning are related to home drinking.

Graph 1: Incidents of Assault in Gunnedah LGA from October 2014 – September 2017 (Source BoCSAR)

Graph 2: Incidents of Assault in Gunnedah LGA from October 2016 – September 2017 by Premises (Source BoCSAR)

### Domestic Violence Related

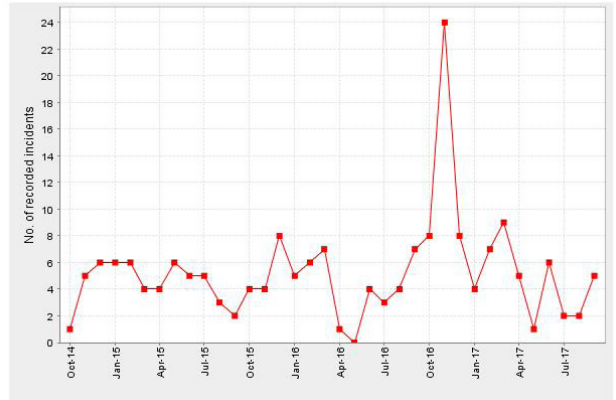
In the 12 month period between October 2013 and September 2014, a total of 95 incidents were recorded with 80 (84.2%) occurring in a residence. A further 10 (10.5%) occurred on roads/streets/footpaths with the remainder of incidents occurring at a financial institution, licensed premise, outdoor public place, and school with each recording 1 incident respectively. 54.7% (52) occurred at night while 45.3% (43) occurred during the day. Most incidents occurred equally on a weekday and weekend. Alcohol was a factor in 52 of the 95 incidents (52.7%).

In 2017 a marginal decrease in recorded incidents is noted. In the 12 month period between October 2016 and September 2017 a total of 81 incidents were recorded of which 75 (92.6%) occurred in a residential premise, 3 (3.7%) on a road/street/footpath, 1 (1.2%) at a recreational venue, 1 (1.2%) at licensed premise, 1 (1.2%) at a retail premise. 45.7% (37) occurred at night while 54.3% (44) occurred during the day. 64.2% (52) incidents occurred on a weekday with alcohol recorded as a factor in 27.2% (22) incidents.

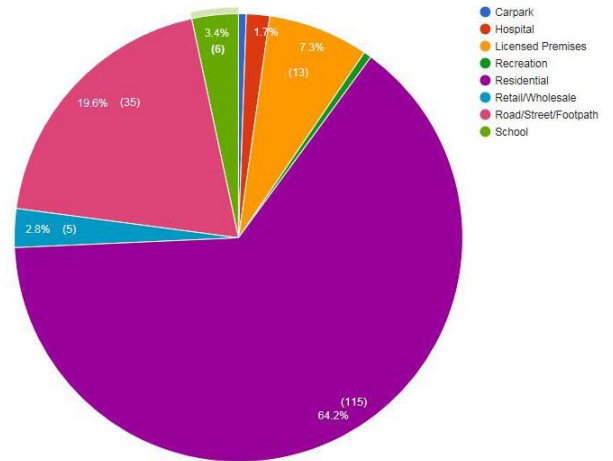
Graph 3: Incidents of Assault (Domestic) in Gunnedah LGA - October 2014 – September 2017 (Source BoCSAR)

October 2014 to September 2017  
Assault - domestic violence related, Gunnedah Local Government Area

No statistically significant upward or downward trend over the 36 month period.

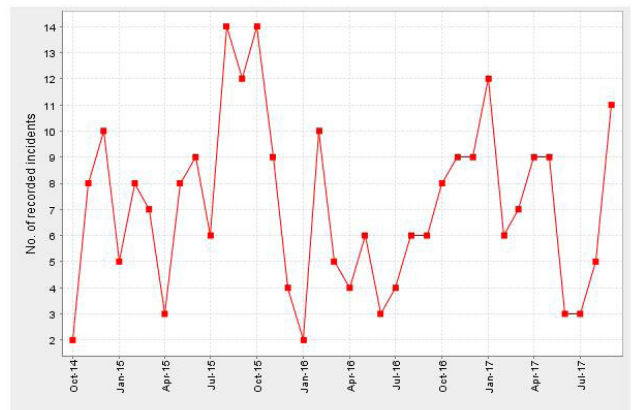


Incidents of Assault in Gunnedah Local Government Area, Oct 2016 to Sep 2017 by Premises



October 2014 to September 2017  
Assault - non-domestic violence related, Gunnedah Local Government Area

No statistically significant upward or downward trend over the 36 month period.



# STATISTICS

## PROPERTY CRIME

### Break and Enters, Stealing, Theft

Research indicates that offenders generally have clear target preferences: location, accessibility and neighbourhood. Furthermore, offenders will generally undertake several target checks before committing an offence and will generally commit an offence in close proximity to where they live. This is based on issues associated with walking long distances with large or visible objects and their knowledge of the surrounding areas.

In NSW 10-20% of victims are re-victimised and households that have been victimised are 4 times more likely to be victimised again. Repeat victimisation is more likely to occur between 1- 4 weeks after the first victimisation. In 93% of offences, the offender does not confront the householder. In the Gunnedah LGA crime trends indicate that the vast majority of property crime occurs on a weekday and at night.

#### Preventions that work:

The three most effective strategies to prevent property crime involve:

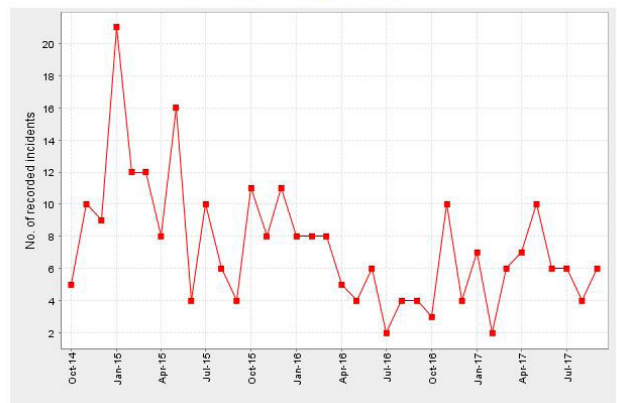
1. Access control
2. Crime Prevention through Environmental Design (CPTED)
3. Natural surveillance (e.g. Neighbourhood Watch)
4. Property marketing (Engraving of goods)

Break and enter offences recorded in the Gunnedah LGA have decreased by 22.1% since October 2014. 71 incidents were recorded during October 2016 to September 2017.

*Graph 4: Incidents of Break and Enter - Dwelling in Gunnedah LGA - October 2014 - September 2017 (Source BoCSAR)*

October 2014 to September 2017  
Break and enter - dwelling, Gunnedah Local Government Area

Statistically significant Downward trend over the 36 month period.  
The average annual percentage change was: -22.1%





# STATISTICS

## ALCOHOL AND DRUG OFFENCES

### Drug Offences

Over a calendar twelve (12) month period in 2013, 53 drug offences were recorded with 26 offences (49.1%) occurring at night, while 27 offences (50.9%) occurred during the day. The majority of offences occurred on the road/street/footpath. In contrast in the same period in 2017, 44 drug offences were recorded, with 43.2% (19) occurring at night and 56.8% (25) during the day. 75% were recorded as occurring on a road, street or footpath with 63.6% on a weekday.

Age and gender of offenders apprehended:

- 10-17 years - 1 offender (3.8%)
- 18+ years - 25 offenders (96.2%)
- 17 (68%) offenders were males
- 8 (32%) offenders were females

Table 2: Incidents of drug offences - Gunnedah LGA (Oct 2013 – Sept 2017) - (Source BoCSAR)

TYPE OF DRUG OFFENCE	Incidents Oct 13 - Sept 14	Incidents Oct 14 - Sept 15	Incidents Oct 15 - Sept 16	Incidents Oct 16 - Sept 17	Trend
Dealing, trafficking in amphetamines	2	30	3	1	NC
Dealing, trafficking in cannabis	2	1	2	1	NC
Dealing, trafficking in cocaine	0	0	0	0	NC
Dealing, trafficking in ecstasy	0	1	0	0	NC
Dealing, trafficking in narcotics	0	0	0	0	NC
Dealing, trafficking in other drugs	0	0	0	1	NC
Manufacture drug	0	0	1	0	NC
Other drug offences	5	10	2	7	NC
Possession and/or use of amphetamines	5	7	7	9	NC
Possession and/or use of cannabis	18	15	14	23	NC
Possession and/or use of narcotics	0	0	2	0	NC
Possession and/or use of other drugs	3	0	0	2	NC
<b>TOTALS</b>	<b>35</b>	<b>64</b>	<b>31</b>	<b>44</b>	

# STATISTICS

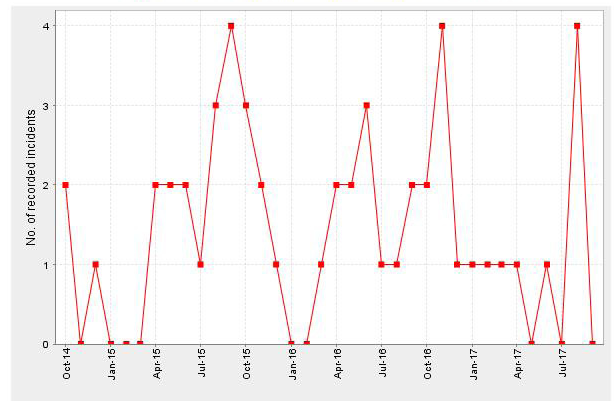
## ALCOHOL AND DRUG OFFENCES

### Liquor Offences

Liquor offences relate to the production, sale, purchase and/or consumption of alcohol in breach of licensing conditions/regulations/laws (ANZSOC, 2011). The category includes the consumption of alcohol in public by a minor, the consumption of liquor in an alcohol free zone, licensing legislation offences, the supply of alcohol to a juvenile and offences against registered clubs.

On average 16 offences are recorded each year across the Shire with all offenders male. During October 2016 to September 2017 68.8% of offences occurred on licensed premises while 18.8% occurred in a public place. The majority of offences occur on a weekend and at night.

October 2014 to September 2017  
Liquor offences, Gunnedah Local Government Area  
No statistically significant upward or downward trend over the 36 month period.



Graph 5: Incidents of Liquor Offences in Gunnedah LGA - October 2014 – September 2017 (Source BoCSAR)



# STATISTICS

## ALCOHOL AND DRUG OFFENCES

### Alcohol Related Offences

'Alcohol related' results indicated are for selected offences where police could be expected to have information about whether alcohol is involved. The offences that the alcohol flag apply to are assault, sexual offences, robbery, murder, attempted murder, manslaughter, harassment, abduction, kidnapping, threatening behaviour, offensive conduct and offensive language. 'Non-alcohol related' offences are the remainder of offences which are not flagged.

*Table 3: Alcohol Related Offences in Gunnedah LGA – October 2016 to September 2017 (Source NSW Police)*

The following selected offences have been rated as alcohol related by NSW Police.

**Note:** It is difficult for police to make a determination about the involvement of alcohol in a criminal incident if the identity of the offender is not known. This is common for many property offences and the following data should therefore be interpreted with this in mind.

OFFENCE TYPE	Alcohol Related*		No Alcohol Related	Total
	No	%		
Arson	0	0.0	15	15
			100.0	100.0
Assault - domestic violence related	59	72.8	22	81
			27.2	100.0
Assault - non-domestic violence related	47	51.6	44	91
			48.4	100.0
Disorderly Conduct	4	12.9	31	35
			77.1	100.0
Robbery	1	100.0	0	1
			0.0	100.0
Sexual Offences	6	100.0	0	6
			0.0	100.0
Break and enter dwelling	0	0.0	71	71
			100.0	100.00
Break and enter non-dwelling	0	0.0	10	10
			100.0	100.0
Harassment, threatening behaviour private nuisance	13	13.1	26	39
			66.7	100.00
Motor vehicle theft	0	0.0	26	26
			100.0	100.0
Steal from motor vehicle	0	0.0	44	44
			100.0	100.0
Steal from retail store	0	0.0	67	37
			100.0	100.0
Steal from person	0	0.0	1	1
			100.0	100.0
Malicious damage to property	0	0.0	150	150
			100.0	100.0

# STATISTICS

## MALICIOUS DAMAGE AND VANDALISM OFFENCES

### Malicious Damage

Crime statistics indicate that malicious damage, which includes graffiti, is the most commonly reported criminal offence in New South Wales however, research by The Australian Institute of Criminology (AIC) indicates that the offence remains significantly underreported due to:

- Insurance policy disincentives (e.g. increased insurance premiums, loss of rating)
- The perceived minor nature of malicious damage offences (not significant enough to report)
- Perceptions that the offender will not be caught.

The 2017 Gunnedah Community Safety Perceptions Survey supports these findings with 87% of respondents stating all three as a key consideration when making the decision to report an act of malicious damage.

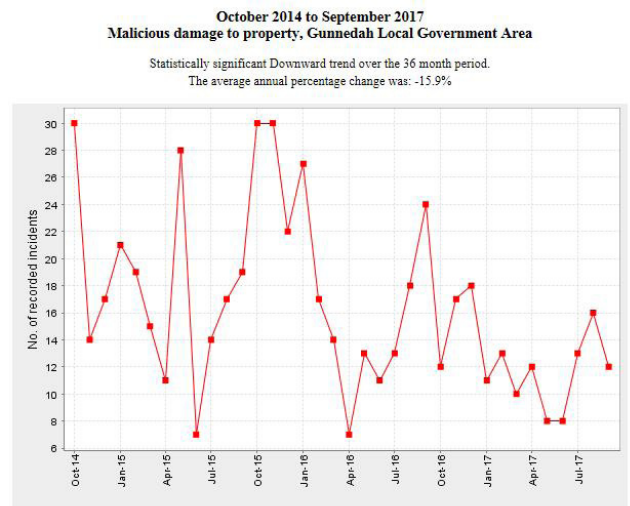
**Preventions that work:** The three most effective strategies involve:

- Access control
- Crime Prevention through Environmental Design (CPTED)
- Education and early intervention initiatives

Access control makes target enclosures harder to penetrate, and increases the risk to the offender of being caught or seen. The redesign of the urban and built environment can also limit the opportunities for crimes of this nature to occur. Strategies can typically include urban or community renewal projects which focus on the revitalisation of suburbs or areas where there is a high concentration of public housing.

A significant downward trend is noted since the October 2014 to September 2015 period (212) with 150 recorded in the October 2016 to September 2017 period.

*Graph 6: Incidents of Malicious Damage in Gunnedah LGA - October 2014 – September 2017 (Source BoCSAR)*







TYPE OF OFFENCE	Incidents 09/10	Incidents 10/11	Incidents 11/12	Incidents 12/13	Incidents 13/14	Incidents 14/15	Incidents 15/16	Incidents 16/17	60 Month Trend
Possession and/or use of amphetamines	3	3	8	6	5	7	5	9	NC
Possession and/or use of cannabis	64	46	27	31	18	16	13	28	NC
Possession and/or use of narcotics	0	1	0	0	0	0	2	0	NC
Possession and/or use of other drugs	4	0	3	1	3	1	0	0	NC
Prohibited and regulated weapons	27	19	24	13	38	40	31	34	NC
Robbery without a weapon	2	2	0	3	1	0	1	0	NC
Steal from a dwelling	65	78	62	74	71	85	60	63	Stable
Steal from motor vehicle	126	164	166	137	149	175	56	35	Down
Steal from a person	2	3	2	6	2	2	5	1	NC
Steal from retail store	26	35	35	36	40	47	28	37	Stable
Theft of a motor vehicle	29	37	35	32	45	41	23	21	Stable
Theft (Other)	62	79	96	78	70	95	47	31	Down
Theft (Stock)	8	5	3	3	5	3	2	3	NC
Trespass	55	55	65	63	64	88	48	44	Stable

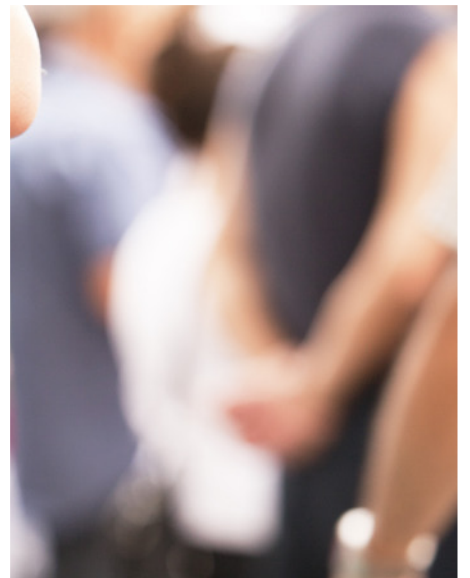






# PART C

# OUR ACTION PLAN



## PRIORITY 1 - ASSAULT

Strategy 1.1: Upgrade infrastructure in targeted areas to prevent non-domestic violence related assault

### Outcomes:

- Increased level of satisfaction among local residents and business owners re lighting levels in the CBD
- Increased level of confidence of local residents in using pedestrian routes during night time hours
- Reduced number of non DV-related assault offences in the targeted areas
- Reduced fear of crime among seniors

### Lead Agencies:

- Council | Police | Crime Prevention Working Group

ACTIONS	POTENTIAL PARTNERS	RESOURCES	TIMEFRAME	PERFORMANCE INDICATORS
<p>1.1.1 Undertake a community safety audit of street lighting levels and CCTV in targeted areas and public spaces, with consideration to residential areas identified as crime 'hot spots'</p>	<ul style="list-style-type: none"> <li>• Energy Providers</li> <li>• Government Departments (Communities NSW)</li> <li>• Oxley LAC Police</li> <li>• Community members</li> <li>• Gunnedah &amp; District Chamber of Commerce &amp; Industry</li> <li>• Local businesses</li> <li>• Local service clubs</li> </ul>	<ul style="list-style-type: none"> <li>• Council staff</li> <li>• LAC Police statistics</li> <li>• Police Hot Spot maps</li> <li>• BOCSAR</li> <li>• Hospital statistics</li> <li>• Media</li> </ul>	<ul style="list-style-type: none"> <li>• Long term</li> </ul>	<ul style="list-style-type: none"> <li>• 6 monthly evaluation &amp; progress reports to CPWG</li> <li>• A reduction in the numbers and incidences of non-domestic violence related assault in targeted areas</li> <li>• Review of 'hot spot' areas</li> </ul>
<p>1.1.2 Develop Shire CCTV Strategy</p>	<ul style="list-style-type: none"> <li>• Community organisations</li> <li>• Church groups</li> <li>• Local advocacy/action groups</li> <li>• Gunnedah PCYC</li> <li>• Villages</li> </ul>	<ul style="list-style-type: none"> <li>• Grant funding</li> <li>• Web based information</li> </ul>		<ul style="list-style-type: none"> <li>• Anecdotal information from project stakeholders and partners</li> <li>• Community safety survey results at 12 month intervals</li> </ul>

## PRIORITY 1 - ASSAULT

Strategy 1.2: Raise community awareness of domestic violence, family violence and sexual assault across the Shire

### Outcomes:

- Increased level of community awareness of the complexities of domestic and family violence
- Increased level of awareness of the support services available
- Reduced number of domestic and family violence and sexual assault incidents across the LGA

### Lead Agencies:

- Council | Police | Crime Prevention Working Group

ACTIONS	POTENTIAL PARTNERS	RESOURCES	TIMEFRAME	PERFORMANCE INDICATORS
1.2.1 Work collaboratively with service providers to identify and support strategies that address the issues of domestic and family violence and sexual assault.	<ul style="list-style-type: none"> <li>• Government Departments (Communities NSW)</li> <li>• Oxley LAC Police</li> <li>• Community members</li> </ul>	<ul style="list-style-type: none"> <li>• Council staff</li> <li>• LAC Police statistics</li> <li>• Police Hot spot maps</li> </ul>	<ul style="list-style-type: none"> <li>• Immediate to long term</li> </ul>	<ul style="list-style-type: none"> <li>• 6 monthly evaluation &amp; progress reports to CPWG</li> <li>• A reduction in the numbers and incidences of domestic violence, family violence related assault in targeted areas</li> <li>• Number of projects, events developed, implemented or supported each year</li> </ul>
1.2.2 Promote the Gunnedah Shire as a 'D&FV No Tolerance Community'	<ul style="list-style-type: none"> <li>• Gunnedah &amp; District Chamber of Commerce &amp; Industry</li> <li>• Local businesses</li> </ul>	<ul style="list-style-type: none"> <li>• BOCSAR</li> <li>• Hospital statistics</li> <li>• Media</li> </ul>		
1.2.3 Raise awareness through participation in and support of key community events (White Ribbon Day, Child Protection Week etc)	<ul style="list-style-type: none"> <li>• Local service clubs</li> <li>• Community organisations</li> <li>• Church groups</li> <li>• Local advocacy/action groups</li> <li>• Local D&amp;FV support services</li> </ul>	<ul style="list-style-type: none"> <li>• Grant funding</li> <li>• Crime authority websites</li> </ul>		
1.2.4 Support opportunities that create and enhance access to early intervention and diversionary programs aimed at addressing issues of family stress	<ul style="list-style-type: none"> <li>• Local D&amp;FV support services</li> <li>• Gunnedah PCYC</li> <li>• Villages</li> </ul>	<ul style="list-style-type: none"> <li>• Existing collateral, fact sheets and training resources available from government departments and authorities</li> </ul>		

## PRIORITY 1 - ASSAULT

### Strategy 1.3: Improve the level of safety in targeted locations throughout the Shire

#### Outcomes:

- Raised awareness among young people of personal protective strategies for themselves and others
- Reduced number of young people who are victims of assault
- Reduced incidents of assault in public places, licensed premises and entertainment precincts

#### Lead Agencies:

- Council | Police | Crime Prevention Working Group

ACTIONS	POTENTIAL PARTNERS	RESOURCES	TIMEFRAME	PERFORMANCE INDICATORS
<p>1.3.1 Support strategies to make information regarding personal safety measures and community safety strategies, available to vulnerable members of our community including young people, people with disability and seniors</p>	<ul style="list-style-type: none"> <li>• Government Departments (Communities NSW)</li> <li>• Community members</li> <li>• Local businesses</li> <li>• Gunnedah &amp; District Chamber of Commerce &amp; Industry</li> <li>• Local venue operators</li> <li>• Gunnedah Liquor Accord</li> <li>• Local service clubs</li> <li>• Community organisations</li> <li>• Church groups</li> <li>• Local advocacy/action groups</li> <li>• Local D&amp;FV support services</li> <li>• Gunnedah PCYC</li> <li>• Gunnedah Youth Council</li> <li>• Villages</li> </ul>	<ul style="list-style-type: none"> <li>• Council staff</li> <li>• GSC Webmaster</li> <li>• LAC Police statistics</li> <li>• Police Hot spot maps</li> <li>• BOCSAR</li> <li>• Hospital statistics</li> <li>• Media</li> <li>• Grant funding</li> <li>• Crime authority websites</li> <li>• Existing collateral, fact sheets and training resources available from government departments and authorities</li> </ul>	<ul style="list-style-type: none"> <li>• Immediate to long term</li> </ul>	<ul style="list-style-type: none"> <li>• 6 monthly evaluation progress reports to CPWG</li> <li>• A reduction in the numbers and incidences of domestic violence, family violence related assault in targeted areas</li> <li>• Council's crime and community safety website portal is current</li> </ul>
<p>1.3.2 Maintain Council's community safety related portal to facilitate increased community access to crime prevention and community safety related information</p>				

## PRIORITY 2 - PROPERTY CRIME

Strategy 2.1: Support education and awareness campaigns which aim to prevent property crime offences across the Shire

### Outcomes:

- Greater awareness among businesses of key strategies to reduce the likelihood of offences at their business
- Greater awareness and understanding among local residents of the steps that they can take to prevent opportunistic crime such as burglary and break and enters
- Reduced opportunities for thieves
- Reduced level of recidivism/repeat offences
- Increased level of community confidence in reporting crime and responses to stealing and burglary offences from Council, police and other stakeholders

### Lead Agencies:

- Council | Police | Crime Prevention Working Group

ACTIONS	POTENTIAL PARTNERS	RESOURCES	TIMEFRAME	PERFORMANCE INDICATORS
2.1.1 Identify and support the delivery of community education initiatives that promote access control and target hardening approaches for householders and business premises	<ul style="list-style-type: none"> <li>• Government Departments (Communities NSW)</li> <li>• Community members</li> <li>• Local businesses</li> <li>• Gunnedah &amp; District Chamber of Commerce &amp; Industry</li> <li>• Local Shopping Centre Management</li> <li>• Local venue operators</li> </ul>	<ul style="list-style-type: none"> <li>• Council staff</li> <li>• GSC Webmaster</li> <li>• LAC Police statistics</li> <li>• BOCSAR</li> </ul>	<ul style="list-style-type: none"> <li>• Immediate to long term</li> </ul>	<ul style="list-style-type: none"> <li>• 6 monthly evaluation &amp; progress reports to CPWG</li> <li>• A reduction in the numbers and incidences of stealing from motor vehicle offences in targeted areas</li> <li>• A reduction in the numbers and incidences of stealing and shoplifting offences in areas targeted by the strategy</li> <li>• High level of engagement of commercial businesses and retailers at forums</li> <li>• Positive feedback from stakeholders and project partner</li> </ul>
2.1.2 Partner with Gunnedah and District Chamber of Commerce & Industry to identify and deliver initiatives that focus on reducing retail crime	<ul style="list-style-type: none"> <li>• Security firms</li> <li>• Gunnedah Liquor Accord</li> <li>• Local service clubs</li> <li>• Community organisations</li> <li>• Church groups</li> <li>• Local advocacy/action groups</li> </ul>	<ul style="list-style-type: none"> <li>• Grant funding</li> <li>• Hot spot maps</li> <li>• Media</li> </ul>		
2.1.3 Consider incentives for residents to register and mark valuables e.g. free library on-loan engravers	<ul style="list-style-type: none"> <li>• Local D&amp;FV support services</li> <li>• Gunnedah PCYC</li> <li>• Villages</li> <li>• Gunnedah Youth Council</li> </ul>	<ul style="list-style-type: none"> <li>• Existing collateral, fact sheets and training resources available from government departments and authorities (e.g. NSW Police Home Safe)</li> </ul>		

## PRIORITY 2 - PROPERTY CRIME

### Strategy 2.2: Increase CCTV in Gunnedah CBD and community surveillance measures across the Shire

#### Outcomes:

- Reduced incidence of break and enter offences in residential areas
- Reduced likelihood of re-victimisation
- Increased ownership of community safety strategies by local residents

#### Lead Agencies:

- Council | Police | Crime Prevention Working Group

ACTIONS	POTENTIAL PARTNERS	RESOURCES	TIMEFRAME	PERFORMANCE INDICATORS
2.2.1 Investigate the feasibility of re-establishing a Neighbourhood Watch program in targeted areas	<ul style="list-style-type: none"> <li>• Government Departments (Communities NSW)</li> <li>• Community members</li> <li>• Local businesses</li> <li>• Gunnedah &amp; District Chamber of Commerce &amp; Industry</li> <li>• Shopping centre management</li> <li>• Local venue operators</li> <li>• Security firms</li> <li>• Gunnedah Liquor Accord</li> <li>• Local service clubs</li> <li>• Community organisations</li> <li>• Church groups</li> <li>• Local advocacy/action groups</li> <li>• Local support services</li> <li>• Gunnedah PCYC</li> <li>• Villages</li> </ul>	<ul style="list-style-type: none"> <li>• Council staff</li> <li>• LAC Police statistics</li> <li>• BOCSAR</li> <li>• NRMA grant funding</li> <li>• NRMA statistics</li> <li>• Hot spot maps</li> <li>• Media</li> <li>• Grant funding</li> <li>• Crime authority websites</li> <li>• Existing collateral, fact sheets and training resources available from government departments and authorities (e.g. NSW Police Home Safe)</li> <li>• Crime prevention leaflets</li> </ul>	<ul style="list-style-type: none"> <li>• Long term</li> </ul>	<ul style="list-style-type: none"> <li>• 6 monthly evaluation &amp; progress reports to CPWG</li> <li>• A reduction in crime relating to the numbers and incidences of property crimes in targeted areas</li> <li>• CCTV Strategy endorsed by Council by 30 June 2019</li> <li>• Completion of Shire CCTV location map by 30 June 2019</li> </ul>
2.2.2 Identify and source funding opportunities and project partners for community surveillance initiatives				
2.2.3 Undertake a CCTV location mapping exercise				
2.2.4 Develop Shire CCTV Strategy				

## PRIORITY 3 - ALCOHOL AND DRUG OFFENCES

Strategy 3.1: Address alcohol and drug related problems that occur at community events throughout the Shire

### Outcomes:

- Delivery of community events where residents feel safe
- Violence free events
- Drug and alcohol free events
- Reduction of alcohol and drug related problems

### Lead Agencies:

- Council | Police | Crime Prevention Working Group

ACTIONS	POTENTIAL PARTNERS	RESOURCES	TIMEFRAME	PERFORMANCE INDICATORS
<p>3.1.1 Investigate the implementation of a requirement by organisers and management of large licensed community events to submit an Alcohol and Drug Management Plan to Council prior to event approval</p>	<ul style="list-style-type: none"> <li>• Government Departments (Communities NSW)</li> <li>• Gunnedah Liquor Accord</li> <li>• Community members</li> <li>• Local businesses</li> <li>• Gunnedah &amp; District Chamber of Commerce &amp; Industry</li> <li>• Local venue operators</li> <li>• Security firms</li> <li>• Local service clubs</li> <li>• Community organisations</li> <li>• Church groups</li> <li>• Local advocacy/action groups</li> <li>• Local support services</li> <li>• Gunnedah PCYC</li> <li>• Villages</li> <li>• Gunnedah Youth Council</li> </ul>	<ul style="list-style-type: none"> <li>• Council staff</li> <li>• LAC Police statistics</li> <li>• BOCSAR</li> <li>• Hot spot maps</li> <li>• Media</li> <li>• Grant funding</li> <li>• Crime authority websites</li> <li>• Council Youth Development Officer</li> <li>• Existing collateral, fact sheets and training resources available from government departments and authorities</li> </ul>	<ul style="list-style-type: none"> <li>• Immediate to long term</li> </ul>	<ul style="list-style-type: none"> <li>• 6 monthly evaluation &amp; progress reports to CPWG</li> <li>• Low level incidence of alcohol related offences at community events</li> <li>• Majority of events delivered by Council are promoted as alcohol and drug free</li> <li>• Number of community safety focused grants applied for</li> <li>• Number of successful grants</li> <li>• Positive feedback from Police regarding drug and alcohol related incidents at specific community events</li> <li>• Zero alcohol related incidents in alcohol free zones and alcohol prohibited areas</li> </ul>
<p>3.1.2 Encourage and support the delivery and planning of drug and alcohol-free community events held in Council controlled open spaces and venues</p>				
<p>3.1.3 Review the location of alcohol free and alcohol prohibited zones within the Shire and maintain current signage</p>				

## PRIORITY 3 - ALCOHOL AND DRUG OFFENCES

Strategy 3.2: Address alcohol and drug related problems that occur at licensed events throughout the Shire

### Outcomes:

- Management of liquor licenses using a strategic approach and vision, to meet the needs of the community
- Eliminate alcohol fueled violence at licensed venues and events

### Lead Agencies:

- Council | Police | Crime Prevention Working Group

ACTIONS	POTENTIAL PARTNERS	RESOURCES	TIMEFRAME	PERFORMANCE INDICATORS
<p>3.1.1 Investigate the implementation of a requirement by organisers and management of large licensed community events to submit an Alcohol and Drug Management Plan to Council prior to event approval</p>	<ul style="list-style-type: none"> <li>• Government Departments (Communities NSW)</li> <li>• Gunnedah Liquor Accord</li> <li>• Community members</li> <li>• Local businesses</li> <li>• Gunnedah &amp; District Chamber of Commerce &amp; Industry</li> <li>• Local venue operators</li> </ul>	<ul style="list-style-type: none"> <li>• Council staff</li> <li>• LAC Police statistics</li> <li>• BOCSAR</li> <li>• Hot spot maps</li> </ul>		<ul style="list-style-type: none"> <li>• 6 monthly evaluation &amp; progress reports to CPWG</li> <li>• Low level incidence of alcohol related offences at community events</li> </ul>
<p>3.1.2 Encourage and support the delivery and planning of drug and alcohol-free community events held in Council controlled open spaces and venues</p>	<ul style="list-style-type: none"> <li>• Security firms</li> <li>• Local service clubs</li> <li>• Community organisations</li> <li>• Church groups</li> <li>• Local advocacy/action groups</li> </ul>	<ul style="list-style-type: none"> <li>• Media</li> <li>• Grant funding</li> <li>• Crime authority websites</li> <li>• Council Youth Development Officer</li> </ul>	<ul style="list-style-type: none"> <li>• Immediate to long term</li> </ul>	<ul style="list-style-type: none"> <li>• Majority of events delivered by Council are promoted as alcohol and drug free</li> <li>• Number of community safety focused grants applied for</li> </ul>
<p>3.1.3 Review the location of alcohol free and alcohol prohibited zones within the Shire and maintain current signage</p>	<ul style="list-style-type: none"> <li>• Local support services</li> <li>• Gunnedah PCYC</li> <li>• Villages</li> <li>• Gunnedah Youth Council</li> </ul>	<ul style="list-style-type: none"> <li>• Existing collateral, fact sheets and training resources available from government departments and authorities</li> </ul>		<ul style="list-style-type: none"> <li>• Number of successful grants</li> <li>• Positive feedback from Police regarding drug and alcohol related incidents at specific community events</li> </ul>



## PRIORITY 4 - MALICIOUS DAMAGE AND VANDALISM

Strategy 4.1: Support education and preventative programs to address malicious damage and vandalism offences across the Shire

### Outcomes:

- Increased capacity of Council and Police to respond to acts of malicious damage and vandalism of Council and community assets

### Lead Agencies:

- Council | Police | Crime Prevention Working Group

ACTIONS	POTENTIAL PARTNERS	RESOURCES	TIMEFRAME	PERFORMANCE INDICATORS
<p>4.1.1 Investigate the implementation of initiatives such as the 'Snap, Send, Solve' phone app to encourage the community to report vandalism and malicious damage to Council infrastructure and amenities</p>	<ul style="list-style-type: none"> <li>• Government Departments (Communities NSW)</li> <li>• Gunnedah Liquor Accord</li> <li>• Community members</li> <li>• Local businesses</li> <li>• Gunnedah &amp; District Chamber of Commerce &amp; Industry</li> <li>• Shopping centre management</li> <li>• Local venue operators</li> <li>• Security firms</li> <li>• Local service clubs</li> <li>• Community organisations</li> <li>• Church groups</li> <li>• Local advocacy/action groups</li> <li>• Local support services</li> <li>• Gunnedah PCYC</li> <li>• Villages</li> <li>• Schools</li> <li>• Media outlets</li> </ul>	<ul style="list-style-type: none"> <li>• Council staff</li> <li>• Council website</li> <li>• Snap, Send, Solve phone app</li> <li>• Hot Spot Maps</li> <li>• Police</li> <li>• Grant funding</li> <li>• Media</li> <li>• Grant funding</li> <li>• Crime authority websites</li> <li>• Existing collateral, fact sheets and training resources available from government departments and authorities</li> </ul>	<ul style="list-style-type: none"> <li>• Immediate to long term</li> </ul>	<ul style="list-style-type: none"> <li>• 6 monthly evaluation progress reports to CPWG</li> <li>• Number of incidents reported via App</li> <li>• Positive feedback from project partners (police)</li> <li>• A reduction in the numbers and incidences of malicious in targeted areas and hot spots</li> </ul>
<p>4.1.2 Encourage reporting of offences to Police through the distribution of information on Council website, information kits and links to crime authorities</p>	<ul style="list-style-type: none"> <li>• Government Departments (Communities NSW)</li> <li>• Gunnedah Liquor Accord</li> <li>• Community members</li> <li>• Local businesses</li> <li>• Gunnedah &amp; District Chamber of Commerce &amp; Industry</li> <li>• Shopping centre management</li> <li>• Local venue operators</li> <li>• Security firms</li> <li>• Local service clubs</li> <li>• Community organisations</li> <li>• Church groups</li> <li>• Local advocacy/action groups</li> <li>• Local support services</li> <li>• Gunnedah PCYC</li> <li>• Villages</li> <li>• Schools</li> <li>• Media outlets</li> </ul>	<ul style="list-style-type: none"> <li>• Council staff</li> <li>• Council website</li> <li>• Snap, Send, Solve phone app</li> <li>• Hot Spot Maps</li> <li>• Police</li> <li>• Grant funding</li> <li>• Media</li> <li>• Grant funding</li> <li>• Crime authority websites</li> <li>• Existing collateral, fact sheets and training resources available from government departments and authorities</li> </ul>	<ul style="list-style-type: none"> <li>• Immediate to long term</li> </ul>	<ul style="list-style-type: none"> <li>• 6 monthly evaluation progress reports to CPWG</li> <li>• Number of incidents reported via App</li> <li>• Positive feedback from project partners (police)</li> <li>• A reduction in the numbers and incidences of malicious in targeted areas and hot spots</li> </ul>

## PRIORITY 4 - MALICIOUS DAMAGE AND VANDALISM

### Strategy 4.2: Eliminate graffiti related offences across the Shire

#### Outcomes:

- A graffiti free community
- Reduction in overall repair costs associated with vandalism and malicious damage of community facilities

#### Lead Agencies:

- Council | Police | Crime Prevention Working Group

ACTIONS	POTENTIAL PARTNERS	RESOURCES	TIMEFRAME	PERFORMANCE INDICATORS
4.2.1 Develop Council Anti-Graffiti Policy with the aim of focusing on education, prevention and early removal	<ul style="list-style-type: none"> <li>• Government Departments (Communities NSW)</li> <li>• Community members</li> <li>• Local businesses</li> <li>• Gunnedah &amp; District Chamber of Commerce &amp; Industry</li> <li>• Shopping centre management</li> <li>• Local venue operators</li> <li>• Security firms</li> <li>• Gunnedah Liquor Accord</li> <li>• Local service clubs</li> <li>• Community organisations</li> <li>• Church groups</li> <li>• Local advocacy/action groups</li> <li>• Local support services</li> <li>• Gunnedah PCYC</li> <li>• Villages</li> <li>• Schools</li> <li>• Media outlets</li> </ul>	<ul style="list-style-type: none"> <li>• Council staff</li> <li>• Council website</li> <li>• Snap, Send, Solve phone app</li> <li>• Hot Spot Maps</li> <li>• Grant funding</li> <li>• Media</li> <li>• Crime authority websites</li> <li>• Existing collateral, fact sheets and training resources available from government departments and authorities</li> </ul>	<ul style="list-style-type: none"> <li>• Immediate to long term</li> </ul>	<ul style="list-style-type: none"> <li>• 6 monthly evaluation &amp; progress reports to CPWG</li> <li>• Endorsement of an Anti-Graffiti Policy by 30 June 2018</li> <li>• Implementation of Graffiti Register by 30 June 2018</li> <li>• A reduction in the number, incidents and overall costs of graffiti related offences in reporting periods</li> <li>• Strong evidence of intervention and diversionary youth activities supported and /or delivered by Council</li> </ul>
4.2.2 Support and deliver initiatives to promote the Shire as a "No Graffiti" tolerance community				
4.2.3 Develop and implement a Council wide Graffiti Register				
4.2.4 Provide sporting and recreational diversionary activities for young people in partnership with community groups and organisations				
4.2.5 Support school and community based initiatives that enhance participation and focus on the positive portrayal and contribution of young people throughout the region				

## PRIORITY 5 - SAFETY THROUGH COMMUNITY DEVELOPMENT

### Strategy 5.1: Educate the community on Safer by Design (CPTED) principles

#### Outcomes:

- Increased understanding of the application of Safer by Design principles among key planning decision makers and within the general community
- Reduced opportunistic crime through greater understanding of and commitment to Lock it or Lose It principles of crime prevention

#### Lead Agencies:

- Council | Police | Crime Prevention Working Group

ACTIONS	POTENTIAL PARTNERS	RESOURCES	TIMEFRAME	PERFORMANCE INDICATORS
5.1.1 Undertake safety audits of identified hot spot areas throughout the community including the Gunnedah CBD.	<ul style="list-style-type: none"> <li>• Government Departments (Communities NSW)</li> <li>• Community members</li> <li>• Local businesses</li> <li>• Gunnedah &amp; District Chamber of Commerce &amp; Industry</li> <li>• Shopping centre management</li> <li>• Local venue operators</li> <li>• Security firms</li> <li>• Gunnedah Liquor Accord</li> <li>• Local service clubs</li> <li>• Community organisations</li> <li>• Church groups</li> <li>• Local advocacy/action groups</li> <li>• Local support services</li> <li>• Gunnedah PCYC</li> <li>• Villages</li> <li>• Schools</li> <li>• Media outlets</li> </ul>	<ul style="list-style-type: none"> <li>• Council staff</li> <li>• Planning Officers</li> <li>• LAC Police statistics</li> <li>• BOCSAR</li> <li>• Hot spot maps</li> <li>• Media</li> <li>• Grant funding</li> <li>• Crime authority websites</li> <li>• Existing collateral, fact sheets and training resources available from government departments and authorities</li> </ul>	<ul style="list-style-type: none"> <li>• Immediate to long term</li> </ul>	<ul style="list-style-type: none"> <li>• 6 monthly evaluation &amp; progress reports to CPWG</li> <li>• Program of safety audits developed</li> <li>• 4 safety audits undertaken per annum.</li> <li>• Evidence of media engagement to advise residents of Safety Audit recommendations</li> <li>• Number of relevant Council staff, Councillors and CPC members who have completed CPTED training.</li> <li>• Level of grant funding success</li> <li>• Evidence of ongoing commitment to Safer by Design Policy with local police</li> <li>• Evidence of ongoing commitment to CPTED in Council's planning controls including Local Environmental Plan (LEP) and Development Control Plan (DCP)</li> </ul>
5.1.2 Partner with Police to deliver safety online seniors seminars				
5.1.3 Facilitate access by seniors to crime prevention and personal safety opportunities				
5.1.4 Ensure accurate information regarding the prevalence and nature of crime in the community is available to seniors				
5.1.5 Promote the principles of situational crime prevention within relevant sections of Council and among Councillors and Crime Prevention Working Group				

## PRIORITY 5 - SAFETY THROUGH COMMUNITY DEVELOPMENT

### Strategy 5.2: Reduce level of harassment, bullying and anti-social behaviour incidents across the Shire

#### Outcomes:

- Greater engagement and increased decision making of young people in community based initiatives
- Reduced level of harassment, bullying and anti- social behaviour incidents across the Shire
- Reduced fear of harassment, bullying and anti-social behaviour particularly among seniors and young people
- Increased promotion of the achievements of young people

#### Lead Agencies:

- Council | Police | Crime Prevention Working Group

ACTIONS	POTENTIAL PARTNERS	RESOURCES	TIMEFRAME	PERFORMANCE INDICATORS
5.2.1 Connect with local youth via the Gunnedah Youth Council to reduce anti-social behaviour	<ul style="list-style-type: none"> <li>• Government Departments (Communities NSW)</li> <li>• Community members Local businesses</li> <li>• Gunnedah &amp; District Chamber of Commerce &amp; Industry</li> <li>• Shopping centre management</li> <li>• Local venue operators</li> <li>• Security firms</li> <li>• Gunnedah Liquor Accord</li> <li>• Local service clubs</li> <li>• Community organisations</li> <li>• Church groups</li> <li>• Local advocacy/action groups</li> <li>• Local support services</li> <li>• Gunnedah PCYC</li> <li>• Villages</li> <li>• Media outlets</li> <li>• Schools and education providers</li> <li>• Gunnedah Youth Council</li> </ul>	<ul style="list-style-type: none"> <li>• Council staff</li> <li>• LAC Police statistics</li> <li>• BOCSAR</li> <li>• Hot spot maps</li> <li>• Media</li> <li>• Grant funding</li> <li>• School principals and teachers</li> <li>• Council Youth Development Officer</li> <li>• Existing collateral, fact sheets and training resources available from government departments and authorities</li> <li>• National Youth Policy (NSW Police)</li> <li>• Disability Inclusion Action Plan 2017-2021</li> </ul>	<ul style="list-style-type: none"> <li>• Immediate to long term</li> </ul>	<ul style="list-style-type: none"> <li>• 6 monthly evaluation &amp; regular progress report to CPWG</li> <li>• Number of community safety initiatives and events developed and implement by the youth group</li> <li>• Level of participation by young people in early intervention initiatives</li> <li>• No of projects initiated in partnership with Oxley LAC police</li> </ul>
5.2.2 Promote positive images, activities and achievements of young people				
5.2.3 Investigate the delivery of initiatives that address issues of bullying and harassment throughout the community particularly among young people (i.e. Stand for the Silent')				

## PRIORITY 5 - SAFETY THROUGH COMMUNITY DEVELOPMENT

### Strategy 5.2: Reduce level of harassment, bullying and anti-social behaviour incidents across the Shire

#### Outcomes:

- Greater engagement and increased decision making of young people in community based initiatives
- Reduced level of harassment, bullying and anti- social behaviour incidents across the Shire
- Reduced fear of harassment, bullying and anti-social behaviour particularly among seniors and young people
- Increased promotion of the achievements of young people

#### Lead Agencies:

- Council | Police | Crime Prevention Working Group

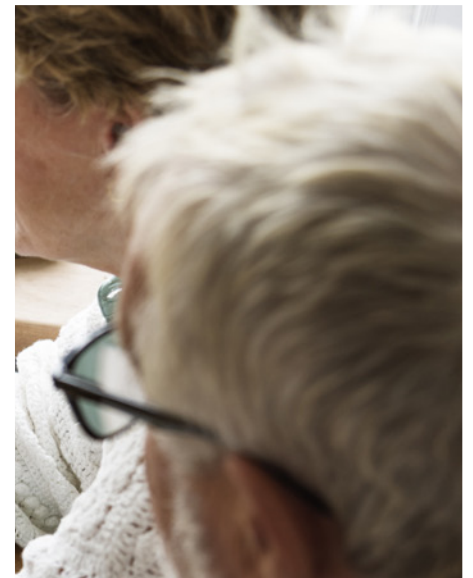
ACTIONS	POTENTIAL PARTNERS	RESOURCES	TIMEFRAME	PERFORMANCE INDICATORS
5.2.4 Work with project partners to develop and implement programs that build self-esteem and promote healthy respectful relationships for young people	<ul style="list-style-type: none"> <li>• Government Departments (Communities NSW)</li> <li>• Community members Local businesses</li> <li>• Gunnedah &amp; District Chamber of Commerce &amp; Industry</li> <li>• Shopping centre management</li> <li>• Local venue operators</li> <li>• Security firms</li> <li>• Gunnedah Liquor Accord</li> <li>• Local service clubs</li> <li>• Community organisations</li> <li>• Church groups</li> <li>• Local advocacy/action groups</li> <li>• Local support services</li> <li>• Gunnedah PCYC</li> <li>• Villages</li> <li>• Media outlets</li> <li>• Schools and education providers</li> <li>• Gunnedah Youth Council</li> </ul>	<ul style="list-style-type: none"> <li>• Council staff</li> <li>• LAC Police statistics</li> <li>• BOCSAR</li> <li>• Hot spot maps</li> <li>• Media</li> <li>• Grant funding</li> <li>• School principals and teachers</li> <li>• Council Youth Development Officer</li> <li>• Existing collateral, fact sheets and training resources available from government departments and authorities</li> <li>• National Youth Policy (NSW Police)</li> <li>• Disability Inclusion Action Plan 2017-2021</li> </ul>	<ul style="list-style-type: none"> <li>• Immediate to long term</li> </ul>	<ul style="list-style-type: none"> <li>• 6 monthly evaluation &amp; regular progress report to CPWG</li> <li>• Number of community safety initiatives and events developed and implement by the youth group</li> <li>• Level of participation by young people in early intervention initiatives</li> <li>• No of projects initiated in partnership with Oxley LAC police</li> </ul>
5.2.5 Support access and inclusion initiatives to promote a safe and welcoming community				
5.2.6 Utilise annual Section 356 Community Small Grants to encourage and support community safety focused initiatives				



# PART D

# OUR IMPLEMENTATION

# APPROACH



## MAKING OUR PLAN HAPPEN

The Gunnedah Crime Prevention Plan 2018 - 2022 has been developed with reference to the Gunnedah Shire Community Strategic Plan 2017-2023. The Plan is based on the underlying assumption that all stakeholders will continue to work together to enhance community safety throughout the Shire. The strategies selected to address the Gunnedah Shire's crime issues are focused on the recognition of the strengths and resources currently available to the region through its service delivery network and its strong community capacities.

Selected strategies throughout the Plan are aimed at addressing the cause of issues, some of which are both generational and cultural, rather than simply responding to the symptoms of crime. There is also a distinct emphasis on interagency collaboration and the strengthening of relationships between Council, other government organisations, and peak community and cultural organisations. This is especially relevant with regard to the Gunnedah Liquor Accord and Gunnedah Crime Prevention Working Group where a strong co-operative effort will be required to tackle difficult issues.

### IMPLEMENTATION

Responsibilities for the delivery of the Action Plan rest with numerous directorates with Council. Council's Community and Social Planner will be responsible for the preparation of periodical progress reports and for connecting with Directorates identified with the Plan to progress actions. Members of the Working Group will also contribute to the implementation of relevant strategies articulated in the Action Plan within the context of their roles and positions within the community.

### RESOURCES

The Plan has been developed with consideration to the existing resources of Council and in the context of the Operational Plan planning process. Consideration has been given to the need for the future and ongoing collaboration of internal stakeholders, and for the ongoing identification of additional funding sources, grant opportunities and partners.

### MONITORING AND EVALUATION

Over the next four (4) years, the Plan will be monitored and evaluated by the performance measures listed within the Action Plan. Council's Community and Social Planner will take a lead role in:

- providing six (6) monthly progress reports to the Working Group
- providing relevant information to the Crime Prevention Working Group and to internal Council stakeholders to facilitate informed decisions on future crime prevention and community safety initiatives;
- modifying strategies within the Plan, where necessary
- updating statistics to ensure that the Plan remains a 'living' document

### NEXT REVIEW DATE

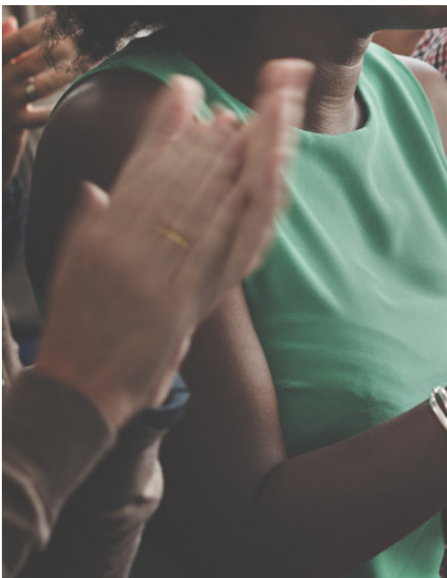
The Plan's review will be initiated by Council's Community and Social Planner in March 2022.







# ACKNOWLEDGEMENTS AND APPENDICES



# APPENDIX 1

## GLOSSARY OF OFFENCE CATEGORIES

OFFENCE CATEGORY	DESCRIPTION (SOURCE: BOCSAR)
<b>Alcohol Related Offences:</b>	Selected offences where police could be expected to have information about whether alcohol is involved. The offences that the alcohol flag apply to are assault, sexual offences, robbery, murder, attempted murder, manslaughter, harassment/threatening behaviour, abduction/kidnapping, offensive conduct and offensive language.
<b>Assault (Domestic and Family Violence, Common and Sexual Assault):</b>	Direct (and immediate/confrontational) infliction of force, injury or violence upon a person or persons or the direct (and immediate/confrontational) threat of force, injury or violence where there is an apprehension that the threat could be enacted (ANZSOC, 2011). Assault can be flagged by police as being domestic violence related or alcohol related. Includes the police incident categories of actual bodily harm, common assault, grievous bodily harm (including malicious wounding), and shoot with intent other than to murder, assault police officer and spike.
<b>Breach Apprehended Violence Order (AVO):</b>	Act or omission breaching the conditions of an apprehended violence order (ANZSOC, 2011). Includes the police incident categories of breach apprehended violence order - domestic, and breach apprehended violence order - personal.
<b>Breach Bail Conditions:</b>	Act or omission breaching the conditions of a bail order (ANZSOC, 2011). Includes the police incident category of breach bail conditions.
<b>Disorderly Conduct:</b>	Offences involving personal conduct that is deemed offensive to members of the public (ANZSOC, 2011). Includes BOCSAR categories of offensive language and conduct, trespass and criminal intent.
<b>Drug Offences:</b>	Possessing, selling, dealing, trafficking, importing, manufacturing or cultivating illicit drugs and the misuse of licit prescription drugs.
<b>Fraud:</b>	Inducing a course of action, by deceit or other dishonest conduct, with the intent to obtain money or other benefit or to evade a liability. The making, use or possession of a forged financial instrument with an intention to obtain an advantage (ANZSOC, 2011). Includes over 15 police incident categories some of which are deception, possess false instrument, fail to pay, embezzlement, computer crime, and corrupt payment

OFFENCE TYPE	Alcohol Related*
<b>Liquor Offences:</b>	An offence that was committed on or in relation to the premises to which the licence relates
<b>Malicious Damage:</b>	The willful and unlawful destruction, damage or defacement of public or private property or the pollution of property or a definable entity held in common by the community (ANZSOC, 2011). It includes the police incident categories of graffiti, malicious damage to property, and public place - damage fountain/wall etc. and public place - damage to a shrine/monument.
<b>Offensive Conduct:</b>	Nonverbal behaviour that is likely to be considered offensive by another person (ANZSOC, 2011). Includes the police incident category of offensive conduct.
<b>Private Nuisance, Harassment and Threatening Behaviour:</b>	Actions that harass or are intended to harass, threaten or invade the privacy of an individual, not amounting to an assault, sexual assault, blackmail or intimidation. Can be face to face, written, or made through a carriage service (e.g. phone, computer, etc.) (ANZSOC, 2011).
<b>Property Crime (Break and Enters, Stealing, Theft):</b>	Unlawful entry of a structure with the intent to commit an offence where the entry is either forced or unforced. Break and enter can occur in dwellings or non-dwellings. Dwellings include residential premises such as houses, home units or villas.
<b>Robbery:</b>	Unlawful taking of property, with intent to permanently deprive the owner of the property, from the immediate possession, control, custody or care of a person, accompanied by the use, and/or threatened use of immediate force or violence (ANZSOC, 2011). 'Robbery' is further categorised as robbery without a weapon, robbery with a firearm or robbery with a weapon not a firearm.
<b>Steal from Dwelling:</b>	Incidents of steal from dwelling where entry was lawfully gained (e.g. stealing from a house to which the offender has been invited) or where the offender did not need to force entry. Includes the police incident categories of 'stealing from dwelling' and 'other stealing' where the premises type was 'residential'.
<b>Steal from Retail Store:</b>	Theft from retail premises of goods for sale, other than motor vehicles, by avoiding payment for those goods. This may also include the taking from retail premises of items not for sale, such as tools, equipment or furnishings (ANZSOC, 2011).

## APPENDIX 2

# OTHER KEY DEFINITIONS AND ACRONYMS

<b>ABS</b>	Australian Bureau of Statistics
<b>AIC</b>	Australian Institute of Criminology
<b>ANZSOC</b>	Australian and New Zealand Society of Criminology
<b>BOCSAR</b>	Bureau of Crime Statistics and Research
<b>Cannabis</b>	Includes marijuana, hashish (hash) and hash oil (Department of Health and Ageing, National Drugs Campaign, 2012).
<b>Cocaine</b>	A stimulant drug which comes in the form of a white crystalline powder (Department of Health and Ageing, National Drugs Campaign, 2012).
<b>CPP</b>	Crime Prevention Plan
<b>CPWG</b>	Crime Prevention Working Group
<b>Day/Night</b>	'Day' is from 6am to 6pm. 'Night' is from 6pm to 6am.
<b>Graffiti</b>	Illegal artwork, writing, drawings or 'tags' that have been etched, scribbled, spray-painted on a wall or surface without permission and often within public view. All graffiti is a crime.
<b>Graffiti Register</b>	A register of graffiti offences which is developed and maintained in action accordance with Section 13 of the Graffiti Control Act 2008
<b>Incidents</b>	A criminal activity detected by or reported to the NSW Police Force, which: involved the same offender(s); involved the same victim(s); occurred at the one location; occurred during one uninterrupted period of time; falls into one offence category; and falls into one incident type.
<b>LGA</b>	Local government area
<b>Street Art</b>	Legal artwork and drawings that have been painted on a wall or surface under supervision and with permission of the owner.
<b>Offenders</b>	Persons of interest who have a legal action commenced against them by the NSW Police Force. Legal actions can include: referral to court, caution, youth justice conference, criminal infringement notice, other infringement notice and/or cannabis or other drug caution.
<b>Weekend/Weekday</b>	'Weekend' - From 6pm Friday until 6am Monday 'Weekday' - From 6am Monday until 6pm Friday

## RESOURCES AND REFERENCES

- Australian Institute of Criminology (AIC) 2012  
*Access control, CPTED and education projects to prevent malicious damage, Handbook for local government. NSW; Attorney General and Justice Department*
- Australian Institute of Criminology (AIC) 2012  
*Access control and awareness campaigns to prevent residential burglary, Handbook for local government. NSW; Attorney General and Justice Department*
- Australian Institute of Criminology (AIC) 2012  
*CPTED and awareness campaigns to prevent stealing from person, Handbook for local government. NSW; Attorney General and Justice Department*
- Australian Institute of Criminology (AIC) 2012  
*CPTED and access control measures to prevent stealing from motor vehicles, Handbook for local government. NSW; Attorney General and Justice Department*
- Australian Institute of Criminology (AIC) 2012  
*Lighting and other improvements to prevent stealing from motor vehicles, Handbook for local government. NSW; Attorney General and Justice Department*
- Australian Institute of Criminology (AIC) 2012  
*Strategies to prevent alcohol-related assault in entertainment precincts, Handbook for local government. NSW; Attorney General and Justice Department*
- Gunnedah Community Strategic Plan 2017 - 2023
- Gunnedah Crime Prevention Plan 2014-177

## WEBSITES

- Australian Attorney General's Department, Crime Prevention  
[www.ag.gov.au/agd/www/ncphome.nsf/](http://www.ag.gov.au/agd/www/ncphome.nsf/)
- Australian Bureau of Statistics (ABS)  
[www.abs.gov.au](http://www.abs.gov.au)
- Australian Institute of Criminology, (AIC)  
[www.aic.gov.au](http://www.aic.gov.au)
- Bureau of Crime Statistics and Research (BOCSAR)  
[www.crimetool.bocsar.nsw.gov.au/bocsar](http://www.crimetool.bocsar.nsw.gov.au/bocsar)
- Crime Prevention Through Environmental Design  
[www.cpted.com.au/home.html](http://www.cpted.com.au/home.html)
- Crime Prevention Resource for Local Councils  
[www.graffiti.nsw.gov.au/cpd/graffiti.nsf/files/lgcprm.pdf/\\$FILE/lgcprm.pdf](http://www.graffiti.nsw.gov.au/cpd/graffiti.nsf/files/lgcprm.pdf/$FILE/lgcprm.pdf)
- NSW Attorney General's Department, Crime Prevention Division  
[www.lawlink.nsw.gov.au/cpd](http://www.lawlink.nsw.gov.au/cpd)
- NSW Attorney General's Department, Crime Prevention Division  
[www.crimeprevention.nsw.gov.au](http://www.crimeprevention.nsw.gov.au)

# CRIME PREVENTION PLAN 2018 - 2022

## GUNNEDAH SHIRE COUNCIL



Shire of

**G u n n e d a h**

Land of Opportunity

### FOR FURTHER INFORMATION CONTACT

Gunnedah Shire Council  
PO Box 63  
GUNNEDAH NSW 2380

TELEPHONE: 02 6740 2100 | FAX: 02 6740 2119

EMAIL: [council@infogunnedah.com.au](mailto:council@infogunnedah.com.au)

WEBSITE: [www.gunnedah.nsw.gov.au](http://www.gunnedah.nsw.gov.au)