

# Gunnedah Shire Council

Welcome to your  
Waste Collection Services



Open New Horizons

**Gunnedah**  
Shire Council



Website: [www.gunnedah.nsw.com.au](http://www.gunnedah.nsw.com.au)  
Email: [council@infogunnedah.nsw.gov.au](mailto:council@infogunnedah.nsw.gov.au)  
Address: 63 Elgin Street, Gunnedah 2380  
1800 208 141 / (02) 6740 2100

# Bin Collection Services



## **Gunnedah and rural area residents:**

The new, larger recycling bins will be collected **fortnightly** from week beginning 5 July 2021. Your recycling is taken for sorting and is reprocessed into new products. **DO NOT BAG RECYCLABLES.**



Garbage bins are collected weekly. The contents of your garbage bin goes straight to landfill, which is the least preferred option for our waste.



## **Gunnedah Township residents:**

Green waste bins are collected fortnightly on the alternate week to your recycling bin. Your green waste is processed and reused as high quality mulch product.

## **Remember:**

- ✓ Download the Recycle Coach app to find your bin day
- ✓ Keep bins clear of cars, trees, signs & other obstacles
- ✓ Place your bins at least 1m apart & 1m from the road
- ✓ Ensure your bin lids close completely
- ✗ Do not put items on top of or next to the bin
- ✗ Do not overfill your bin (must weigh less than 75kg)
- ✗ Do not place your bin in your driveway

**To enquire about additional kerbside bins or upgrades, please contact council.**

# Recycling

**YES** ✓

Steel, tin & aluminium cans



Plastic bottles & containers from the kitchen, bathroom & laundry (lids removed)



Glass bottles & jars (lids removed)



Cardboard boxes, milk & juice cartons, newspaper, magazines, office paper & junk mail

**NO** ✗ Remember to place recycling loose in the bin, NOT in plastic bags



Bagged recycling



Green waste



Food & garbage



Polystyrene



Plastic bags & wrappers



Ceramics & crockery



Medical waste



Aerosol cans



Nappies



Hazardous or chemical waste

# Green waste

YES



Small sticks  
& twigs



Lawn  
clippings



Dry leaves  
& prunings



Fresh leaves  
& prunings

NO



Nappies



Building  
materials



Rocks or soil



Plastic bags



Recyclables



Food or garbage



Gas bottles, paint,  
batteries or oil

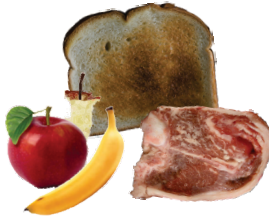


# Garbage

**YES** 



Nappies



Food waste



Plastic bags & wrappers



Polystyrene



Ceramics & crockery



Drinking glass

**NO** 



Green waste



Building materials



Rocks or soil



Batteries



Recyclables



Medical waste



Hazardous or chemical waste



Gas bottles, paint or oil



## Community Recycling Centre



Gas bottles



Fire extinguishers



Smoke detectors



Household  
batteries



Car batteries



Fluoro globes  
and tubes



Paint



Motor oils



Other oils

**Drop off your hazardous and problem household waste for free!**

Your community recycling centre is located at:  
Gunnedah Waste Management Depot  
418 Quia Road, Gunnedah  
Open Tuesday to Sunday, 9am-4pm

Closed Good Friday, ANZAC Day,  
Christmas Day and New Years Day



## Doing a Spring Clean or Moving Out?

Pre-loved household items such as furniture, books and kitchenware can be donated to the **Bowerbird Shop**, located at the Gunnedah Waste Management Depot.

Donate items in saleable condition or drop by to pick up a bargain!



### Other waste services

The following items can be taken to the Gunnedah Waste Management Facility, located at 418 Quia Road (costs may apply):

- Mattresses
- Tyres
- E-waste
- Excess recycling
- Green waste

Visit [gunnedah.nsw.gov.au](http://gunnedah.nsw.gov.au) for more ways to dispose of household waste responsibly.

## Waste Management Facilities

### Gunnedah Waste Management Facility - 418 Quia Rd

Ph: 6742 3943

Open: Mon to Sun 8:00am to 5:00pm

Closed: New Years Day, Christmas Day, Anzac Day, Good Friday

### Curlewis Rural Waste Facility - Kamilaroi Highway, Curlewis

Open: Wed 9:00am to 12:00pm

Sat 9:00am to 11:00am

Sun 1:00pm to 4:00pm

### Carroll Rural Waste Facility - Stephen St, Carroll

Open: Wed & Sun 2:00pm to 4:00pm

### Breeza Mobile Service - Breeza St, Breeza

Open: Wed 2:00pm to 4:00pm

Sat 1:00pm to 4:00pm

### Tambar Springs Transfer Station - School St, Tambar Springs

Open: Tue 9:00am to 11:00am

Thu 2:00pm to 4:00pm

Sat 1:00pm to 4:00pm

### Mullaley Transfer Station - Boggabri Stock Route, Mullaley

Open: Tue 1:00pm to 4:00pm

Thu & Sun 9:00am to 12:00pm

### Kelvin Mobile Service - Kelvin Hill

Open: Wed & Sun 9:00am to 11:00am

### Emerald Hill Mobile Service - Emerald Hill

Open: Sat 8:30am to 10:30am